

SINCIL BANK COMMUNITY PARTNERSHIP



ANNUAL REPORT
FOR 2020



Contents

2 Foreword

3 Introduction

5 Placeshaping recommendations

8 External funding

10 Timeline

11 What to expect during 2021

12 Our Heritage High Street

13 Resident Survey

15 Volunteering Opportunities

16 How to get involved

FOREWORD

There have been people living in Sincil Bank for hundreds of years. As the latest residents to live here we have been given an opportunity to help shape the development of our area in the present day for us, and those who will follow us. It is a very exciting time to see what future sustainability and resilience can be developed in cooperation with our Sincil Bank community partners. We all want our area to build on the achievements of the past and working together we hope to improve and enrich our community wherever we can. This is our story so far and, as our greatest strength is the people who live here, we welcome all of you who wish to to shape it with us.

Carol Daniel
Eve Harrison
Co-Chairs Sincil Bank Neighbourhood Board



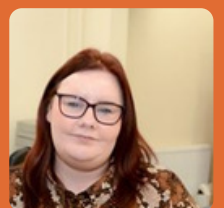
(L-R Eve and Carol)

2020 has been an extremely difficult year for us all, at the time of writing we are still unsure as to when life will return back to normal. Despite the many challenges that we have faced this year, work has continued to ensure that we are delivering projects to meet the needs of our community. There is no doubt that some of this progress has been delayed due to the pandemic, with this in mind we thought that it would be useful to provide an update on progress against the recommendations included within the Place Shaping Strategy and which projects will be progressed further in 2021.

I hope that you enjoy reading our report and if you have any questions then please contact the Neighbourhood Team on **(01522) 510 157**



Paul Carrick
Neighbourhood
Manager



Rachel Taylor
Community
Connector

INTRODUCTION

In 2016 City of Lincoln Council commissioned OpenPlan to prepare a Place Shaping Strategy for the Sincil Bank area. The City of Lincoln Council wanted to listen to local residents, businesses and organisations and ask how they see the area improving over the short, medium and long term to make Sincil Bank a better place for the people who live and work in the area. In producing the strategy Openplan analysed previous studies carried out in the area including Placecheck reports. Openplan along with the Neighbourhood Team hosted a series of community workshops for residents, businesses and organisations to attend. These workshops helped shaped the recommendations and vision for the area.



Our Vision

A village in the city, a community of communities where people from diverse backgrounds and different needs live in an area that is close to the city centre, safe, clean and has opportunities to come together as a community. A place where people feel at home, healthy, happy, have facilities and opportunities available to lead a better life. A place where making friends, sharing ideas and exploring creativity is welcomed, a place where people choose to live.



The Place Shaping Strategy was launched in 2017 at an event open to all those who live and work in Sincil Bank. It was agreed by the Neighbourhood Board to set up working groups, with the aim of monitoring progress to ensure that the recommendations are delivered. The working groups are made up of local residents and organisations and feed back into the Neighbourhood Board on a quarterly basis. The working groups are:

- Streets for People
- Homes
- Community Hubs, Events and Activities

Each group has developed an action plan, based on the recommendations identified in the Place Shaping Strategy

"The Neighbourhood Board is important to the community as it brings together local residents with those that work in the area and our local Councillors"
Anne Lawson Local Resident



PLACESHAPING RECOMMENDATIONS

Streets for People

Many of the recommendations focus on improving the appearance of the neighbourhood and bringing colour to our streets. Below are a selection of projects that have been delivered since the launch of the strategy:

Regulation 7:

In January 2019, the government informed the City of Lincoln Council that its proposal to ban the display of to-let boards on certain streets in Sincil Bank had been given consent by the Secretary of State. This was enforceable from April 2019 and is being monitored by the neighbourhood and planning enforcement teams.

CCTV:

Phase 1 – Four cameras were installed around Hermit Street and the near by garage site. Since the cameras have been installed there has been a positive community response and a reduction in the incidents of fly tipping in the area.

Phase 2 - Further work is required to identify suitable locations to install mobile cameras in the area and secure funding.

"It is clear that the way the area looks is of huge concern to people. Residents work hard to do their bit to keep the area clean and tidy and a number of projects have been delivered to brighten up the area. We have ambitious plans for the upcoming year and we are confident that we will continue to have a neighbourhood that we are proud of"

Barbara Gooding Local Resident





Residents Parking:

The streets of Sincil Bank have been used by commuters as free parking spaces for many years, this adds to congestion in the area and has a negative impact on local air quality.



Following consultation conducted by Lincolnshire County Council, residents of the area voted in favour of introducing a Residents Parking Scheme. Implementing the scheme has been delayed due to the pandemic, once we are aware of amended timescales, we will publish them in the newsletter and the Sincil Bank website (www.sincilbankcommunity.co.uk)



Virgin Media Cabinets:

Twenty Six Virgin Media cabinets were painted to form an arts trail in the area and to bring some much need colour to the streets of Sincil Bank. Lincolnshire Employment Accommodation Project (LEAP) were successful in receiving Community Chest money to put the project together and with the help of both local schools, residents and community groups produced some excellent art work for the local community to enjoy. This project attracted a lot of positive media coverage.



St Andrews Garden:

Sincil Community Land Trust successfully received funding to develop the old play area on St Andrews Close. The lease was agreed by the City of Lincoln Council. Consultation events were held with local residents in April 2019, concept designs were then produced by University of Lincoln students. Work on the park commenced during September 2020 and is likely to be open to the public during the summer of 2021.



Community Hubs, Events and Activities

Many residents have stated they would like to see more opportunities for people to come together and create a sense of community spirit. Local residents have worked hard to create these opportunities.

Sincil Bank Community Hub

The neighbourhood team moved into the hub in December 2018. Between then and March 2020, over two thousand five hundred visitors have accessed various services. Alongside providing advice and guidance to members of our community, the Hub has also hosted language classes and various community meetings.

The Hub is also the focal point for local residents to find out what's going in the area and how you can be involved. The Hub has remained closed during the majority of the pandemic, however there are plans to reopen on a part time basis from the 20th April

Community Events and Activities

Various events and activities have taken place across the neighbourhood thanks to community groups such as Maze Matters and Sincil Bank Rivercare/Litterpick Group. Maze Matters successfully applied for funds from City of Lincoln Council and were able to put on their first Festival of Lights Celebration. This event saw people of all ages come together to celebrate Festival of Lights. In preparation for the evenings celebrations workshops were held to make decorations and lanterns. Following the parade there was a night filled with dancing, henna art and curry.

Sincil Bank Rivercare and Litterpick group have continued to clean up the area with a monthly get together. This has changed due to Covid-19, however the group has encouraged people to focus on their own streets and have offered equipment to help.

The Neighbourhood Team organised a Sincil Bank Heroes Celebration which took place during February 2020 to thank those who volunteer in the area. Fifty nominations were received in total with over a hundred people attending. It was a huge success with members of the community coming together. We look forward to hosting more celebrations like this next year once we are safely able to do so.



EXTERNAL FUNDING

To assist in addressing identified community needs additional funding has been sourced. We have provided an explanation of the funding that has been attracted and how it has been spent.

Sincil Bank Community Chest

The Sincil Bank Community Chest is an additional source of funding to support small scale projects that are of benefit to the local community. The Chest is funded by the Lincolnshire Economic Action Partnership (LEAP), Investors in Lincoln and the City of Lincoln Council. Community Chest was launched in 2019, since this time thirty one projects have been funded totaling £50,000. Projects are submitted to the neighbourhood board who make recommendations on which projects should be successful. Below is a full list of all projects funded:

- Energize - Easter Holiday Scheme
- DevelopmentPlus - Health and Wellbeing Sessions
- Lincoln University - Creative Hub Hermit Street
- RiverCare/ Community Litter picks
- LEAP - Virgin Media Boxes
- Compassionate Lincoln - Christmas Event
- Children's Links - Safe Street Play
- Sincil Community Land Trust - Incorporation Fees
- Sincil Bank Community Allotment - Equipment
- Sincil Bank Residents Group - Colourful litter bin
- Bricks and Bones - Archaeological activities
- Maze Matters - Sincil Bank by the Sea, Sincil Bank News, Sincil Singers and Sincil Banksy
- Bridge Church - Family Fun Day, Portable Skate Park
- Bishop King CE School - Fuel for School
- SPAG CE School - Fuel for School
- Clean Lincoln Everywhere and Now - CLEAN Hub
- Lincolnshire Credit Union- Credit Union in Sincil Bank
- ACTS Trust - Detached Youth Work
- Central Methodist Church - Pick and Mix
- Busydays - Gym Equipment
- Friends of Bishop King - Playground equipment
- St Peter at Gowts - Learn to read
- St Peter at Gowts - Values in the Community
- Bishop King CE School - Imp Trail



Place Based Social Action

Place Based Social Action is a project in the Sincil Bank area funded by the National Lottery Community Fund and the Department for Digital, Culture, Media and Sport (DCMS). The Sincil Bank neighbourhood is one of ten areas nationally to receive the funding and enter the second phase of the project, which will end in March 2022. Lincoln City Foundation is the lead organisation of the three-year project which focuses on enabling local people to drive changes in their neighbourhood and work together with other partners to create a shared vision for their community. The Place Based Social Action plan for the Sincil Bank neighbourhood was developed based on feedback gathered from residents and the local community over several years by the Community Organising team and partner organisations. The plan is continually reviewed based on ongoing engagement with local residents and according to their local priorities.

If you would like to find out more about please contact the Community Organisers at:

community@lincolncityfoundation.co.uk

Funding from the Ministry of Housing, Communities and Local Government

City of Lincoln Council successfully received £235,000 from the Ministry of Housing, Communities and Local Government. This has funded a number of projects in the area.

A Parent Support Worker has been employed to work between both primary schools in the area. The role is based around supporting EAL parents with their child's needs and aspirations and to support parents with their parenting skills, as well as working with local services.

An additional Community Organiser has been employed by Lincoln City Foundation. This role aims to bring people together who do not speak English as their first language to practice their skills and build up their confidence.

DevelopmentPlus, Step in the Right Direction programme supports people to seek opportunities to 'positively move on' in some way in their lives. This is a friendly one to one mentoring and coaching programme that can be tailored to your unique needs and build upon your unique strengths.

A Development Project Officer was employed by the VCS to support individuals in finding employment and volunteering opportunities in Sincil Bank.

The Rogue Landlord Programme proactively inspected privately rented properties to improve housing conditions and penalise those landlords that let unsafe housing. Council officers worked with partner enforcement agencies to disrupt the activities of criminal landlords who exploit vulnerable migrant workers who are unaware of their housing rights.

A Sincil Bank Directory has been put together for those living in Sincil Bank and those moving to the area. The directory gives useful information about the area and where to access local services, as well as what social activities are available in the neighbourhood. The directory is available in five different languages: Bulgarian, Lithuanian, Polish, Russian and Romanian.

Sincil Bank Events - a number of events have taken place during 2019/20 including Festival of Lights, World Hello Day and a Christmas Event. Unfortunately due to Covid-19 events such as a May Day Festival and an Outdoor Cinema were cancelled. A photography project and events training with Lincoln University will be two of the projects that will take place this year, for more information please call into the Community Hub.

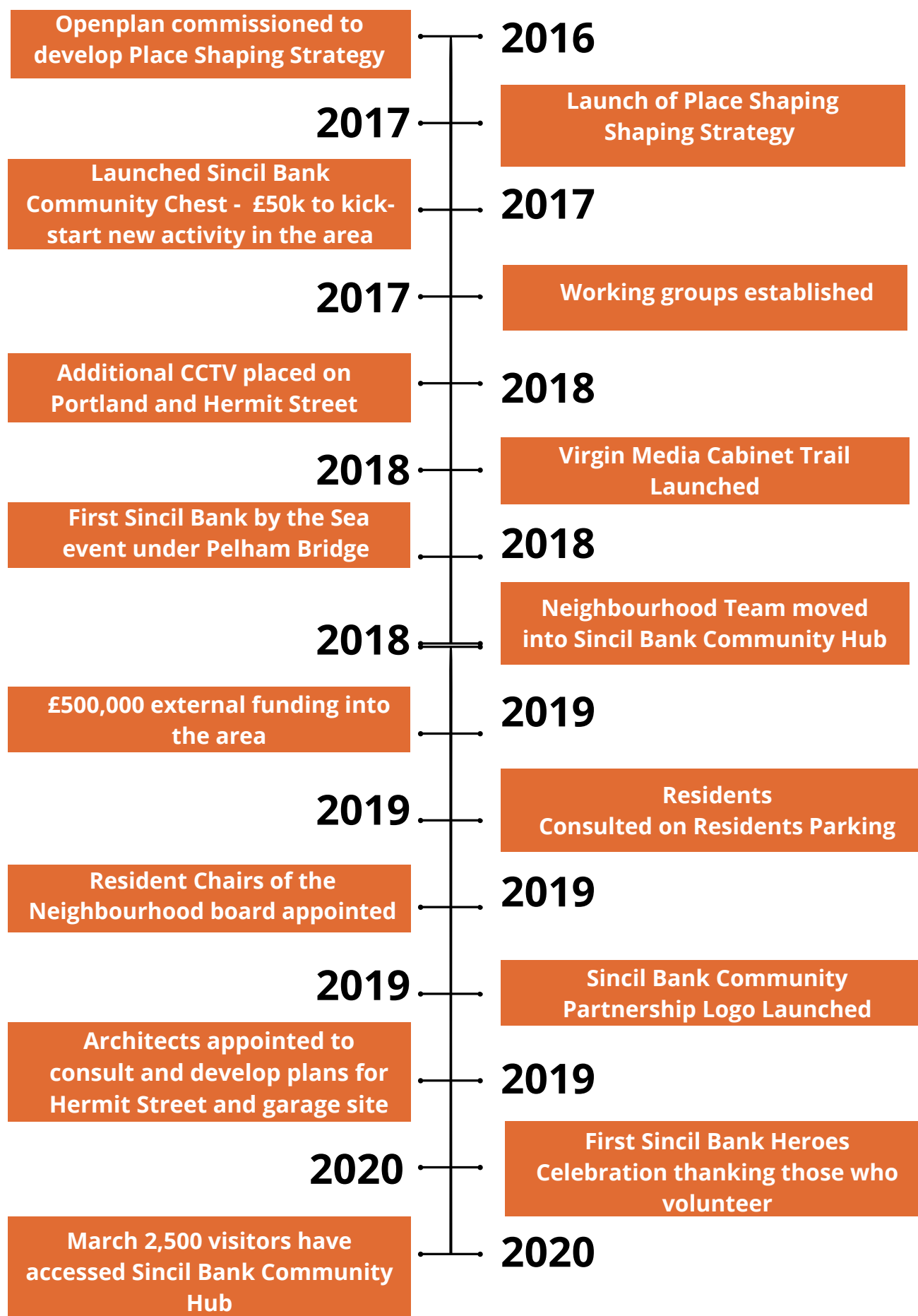
St Andrew's Garden

The Sincil Community Land Trust successfully applied for funding to develop a pocket park. £25,000 was awarded by the Ministry of Housing, Communities and Local Government. They offer modest funding for the reinstatement of otherwise abandoned or neglected open spaces in residential neighbourhoods such as small public parks. Sincil Community Land Trust has taken out a lease from City of Lincoln Council on a former children's playground in St Andrew's Close to bring it back to public use as a green space for the community. Development of the park is under way and it is hoped that the garden will open as restrictions start to ease.



TIMELINE

The below timeline shows a number of key projects and when they were delivered



WHAT TO EXPECT DURING 2021

2021 is going to be an exciting year for the neighbourhood. The focus will be on delivering a number of the longer term transformational recommendations included in the Place Shaping Strategy. Here are a number of examples:

Hermit Street

Architects were appointed at the end of last year and we now have some exciting concept designs to improve the appearance of Hermit Street including the garage site. Work is ongoing to identify ways to translate these concepts into reality.

Traffic Reduction

Alongside the implementation of residents parking, various solutions to the complicated traffic management in the neighbourhood have been explored. Three alternatives were identified that will result in a reduction of traffic entering the area. Feedback was given to Lincolnshire County Council who are now exploring ways to fund these interventions. An application for funding was submitted to the Towns Fund at the end of October 2020, the outcome of this is likely to be known by April 2021.

Development of Open Spaces

During 2021, we will work with partners to develop options for the open spaces owned by the council on Chelmsford Street and the former play area at Archer Street.

Good Neighbours Scheme

During the pandemic the need to support people in our community was needed more than ever. With this in mind, Community Lincs/YMCA are supporting people in our area to set up a Good Neighbour Scheme.



OUR HERITAGE HIGH STREET



Lincoln's High Street has been successful in receiving funding to become a 'High Street Heritage Action Zone'. One of just 68 projects across the country taking part in the scheme, the investment aims to transform high street and make it more sustainable and secure for the future. The City of Lincoln Council have received funding from Historic England to deliver an extensive programme of historic building restorations designed to revitalise the area and uncover its rich history. We have an exciting community engagement programme planned over the next 3 years including fun events and activities for everyone to enjoy. Lincoln's heritage high street programme started in January 2021 and will run for the next 3 years until 2024. More information about Lincoln's HSHAZ can be found on the Council's website:

<https://www.lincoln.gov.uk/high-street-heritage-action-zone>. Find out more about the national scheme: **<https://historicengland.org.uk/services-skills/heritage-action-zones/regenerating-historic-high-streets/>**

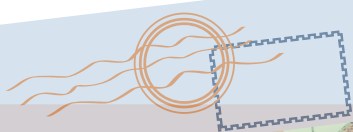
How you can get involved:

We want to ensure that Sincil Bank residents have a real say and opportunities to help shape and steer the programme and we're looking to build a community steering group made up of local residents, charities and businesses. If you'd like to find out more about the project and how you can get involved, or to express an interest in being part of our community board, please email: **HAZ@lincoln.gov.uk** More information on our website:

<https://www.lincoln.gov.uk/high-street-heritage-action-zone/community-activities-within-lincoln-hshaz>

Non-repayable property grants:

If you are a commercial property tenant, business owner or landlord within the designated HSHAZ area (outlined on the map above) you may be eligible for a non-repayable grant of up to 90% of the for restoration, shop front refurbishment and/or change of use. If successful, as part of the HSHAZ you will be supported by an experienced team of professionals to deliver a bespoke, high quality sympathetic restoration and refurbishment to preserve the building and add maximum curb-appeal. Property improvements can include, but are not limited to, repairs, reinstating lost features, and making buildings suitable for new use. For more information and how to apply visit: **<https://www.lincoln.gov.uk/high-street-heritage-action-zone/hshaz-property-grants/1>**

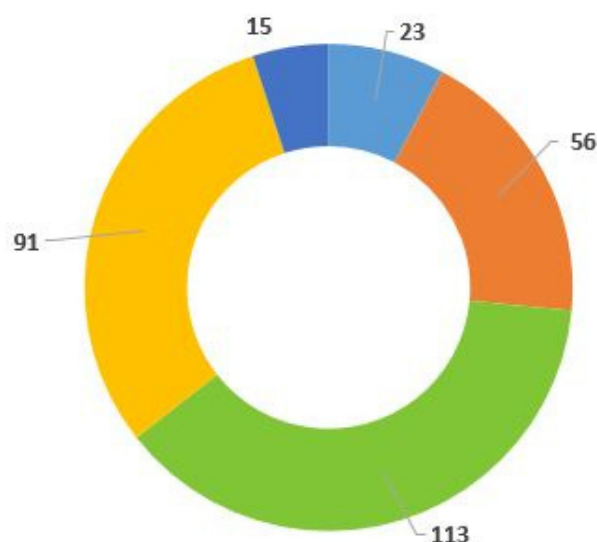


RESIDENTS SURVEY RESULTS



In the Summer of 2019 the Neighbourhood Team carried out a residents survey. We received over three hundred responses, with respondents coming from forty nine different streets in the area. We have included a summary of the findings from the survey below, this information will continue to be used to influence the work that takes place in the area. The Neighbourhood Team will be carrying out the same survey in 2022, this information will be used to monitor progress and ensure that these interventions are making a positive impact. If you would like to see a full copy of the results please contact the Neighbourhood Team.

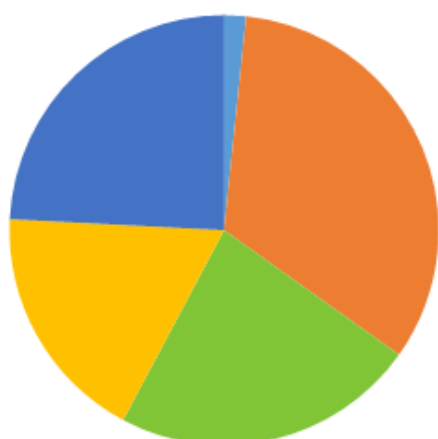
How strongly do you feel you belong to the community?	Amount
Don't know	23
Fairly strongly	56
Not at all strongly	113
Not very strongly	91
Very strongly	15
Grand Total	298



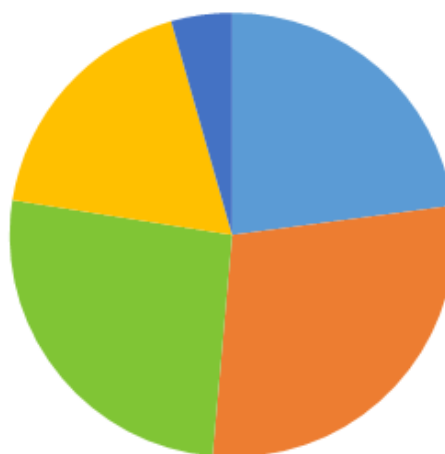
33.2% of responders stated they felt their neighbourhood was getting worse, while only 1.64% believed the Sincil Bank area was getting better.

4.42% of responders stated they were very satisfied with the area they live, while 18.07% were very dissatisfied.

■ getting better
■ getting worse
■ same
■ slightly better
■ slightly worse



■ fairly dissatisfied
■ fairly satisfied
■ neither
■ very dissatisfied
■ very satisfied



Experience of living in Sincil Bank

	Very strongly	Fairly Strongly	Not very strongly	Not at all strongly	Don't know
There is a good range of community activities in the area	0.7%	22.9%	29.6%	10.8%	35.9%
There is a lack of community facilities in my local area	7.8%	32.0%	24.5%	4.6%	30.9%
I am from a similar background to my neighbours	4.9%	24.9%	31.7%	16.7%	21.7%
I make time to get to know my neighbours and be involved in the community	6.1%	31.2%	37.6%	14.3%	10.7%
I live in a place where people from different backgrounds get on well together	3.5%	28.6%	30.3%	13.9%	23.7%
I am not interested in getting to know my neighbours	6.3%	22.6%	43.1%	21.2%	6.9%
People in the area treat each other with respect and consideration	2.7%	28.5%	27.1%	26.8%	14.8%

A further survey was conducted during summer 2020 to help identify if there are any changing priorities as a result of the pandemic. The results of the survey are outlined below:

The impact of lockdown/Covid 19 on Sincil Bank Residents

32% of residents felt that lockdown/covid-19 had little influence on their personal circumstances.

36% of residents reported feeling more isolated during lockdown and had missing seeing friends/family and engaging in normal activity.

25% of residents felt that during lockdown/Covid-19 more community cohesion was apparent in the Sincil Bank area.

25% of residents reported increased littering in the area during lockdown and **18%** stated seeing more instances of antisocial behaviour.

Neighbourhood Issues

92% cleanliness and the appearance of the neighbourhood

55% lack of green space and poor understanding of different cultures

65% low sense of community and lack of interaction with neighbours

Moving Forward▶▶

Residents wanted to see more cleanliness (**39%**), people having increased pride and respect (**26%**) and action to address antisocial behavior (**19%**) Residents wanted to see less antisocial behaviour (**47.93%**) and less flytipping (**52%**) in thier neighbourhood.

Next Steps:

Let's work together. Residents suggested many ideas to improve the Sincil Bank neighbourhood and tackle key concerns including community events and activities, actions to improve cultural understanding and clean up campaigns. The Sincil Bank Community partnership wants to support residents to put these ideas into action, help to address local concerns and realise your vision for the Sincil Bank neighbourhood.

VOLUNTEERING OPPORTUNITIES



Communications Group

- Publications design
- Website content/design
- Local newsletter

Please contact for more information:
rachel.a.taylor@lincoln.gov.uk or
Tel: 01522 510157

Maze Matters & Litter Picking

- Event planning
- Community art projects
- Litter picking

Please contact for more information:
mazematters@outlook.com or
through our Facebook page Sincil Bank Area
Lincoln Community-Maze Matters

St Andrews Garden

- Garden maintenance
- Planting
- Events

Please contact for more information:
alice.carter@lincolncityfoundation.co.uk
or Tel: 01522 563792

Sincil Community Land Trust

- Project planning
- Refurbishing local houses
- Developing community assets

Please contact for more information:
alice.carter@lincolncityfoundation.co.uk
or Tel: 01522 563792



HOW TO GET INVOLVED



Sincil Bank Community Partnership is made up of residents and organisations who are committed to making Sincil Bank an even better place to live and work.

Meetings take place every three months to exchange information and explore ways we can work together to address community priorities. Alongside coordinating activities in the area the board influences how certain funding is allocated. An example of this is the Community Chest, board members promote this fund widely across the neighbourhood and recommend projects that they feel should receive funding.

Do you have a passion for Sincil Bank? Do you have an idea that would make the area even better? If so, there are funds available that could make it happen. Apply to your Neighbourhood Board for funding. If you need help or advice just get in touch with the Neighbourhood Team. We are always looking for new residents to join our Neighbourhood Board and various working groups.

Neighbourhood Team contact details

If you are interested or would like more information, please contact:

 **01522 510157**
 **rachel.a.taylor@lincoln.gov.uk**
 **www.sincilbankcommunity.co.uk**

We are based at the Sincil Bank Community Hub, 30 Portland Street

